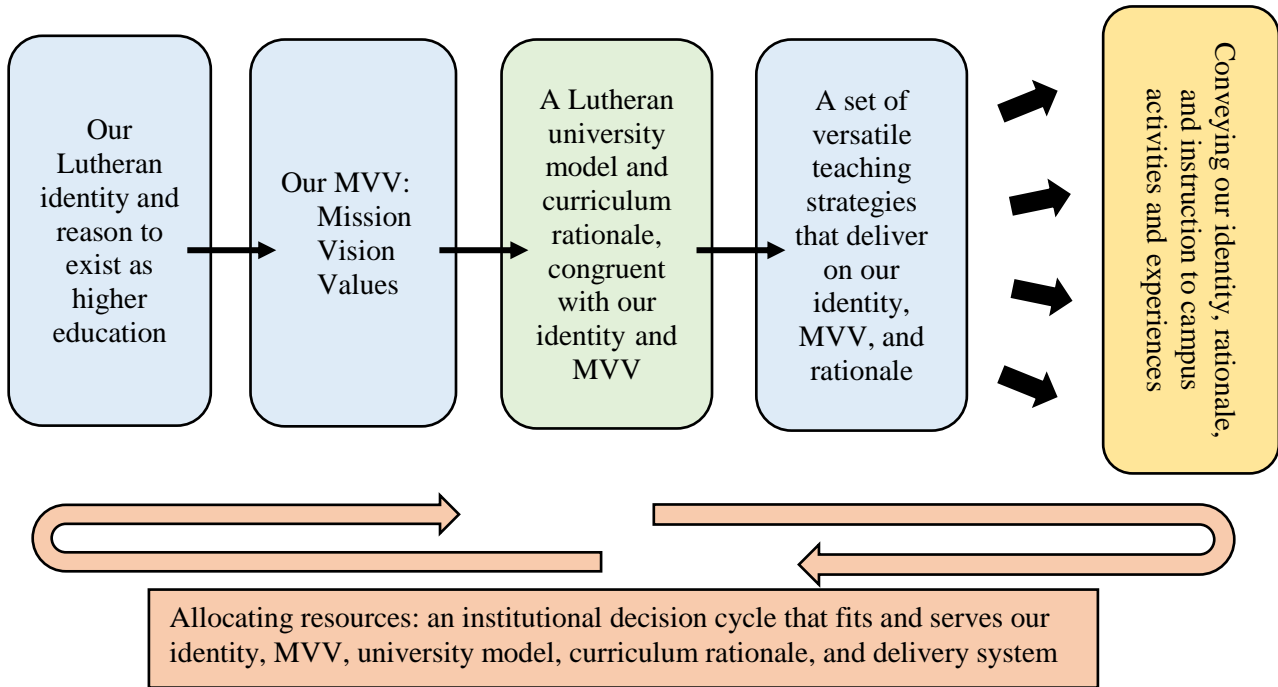


A LUTHERAN UNIVERSITY SCHEMATIC



A Lutheran University Schematic

The schematic invites discussion about the need for a coherent working rationale (the center box) that flows out of our Lutheran tradition and institutional identity as expressed in our mission, vision, and core values and convictions. This rationale then shapes our curriculum and instruction, which informs all of the university's other activities for students, faculty, staff, and administration. In this way, the university exhibits for students, and for the church and world, congruence with its identity and meaningful direction and purpose in its teaching and community life. The decision cycle accesses all, not just one or some, elements of this dynamic to guide institutional decisions and sustain coherence in the university's Reformation identity: *semper reformanda*.